





Hospital

Rev	Description	Date	Dr. By / App. By
LD	original by	date created 21.06.12	approved by IMW

AMBER SOLUTIONS FOR CARE  
NHS  
Oxfordshire

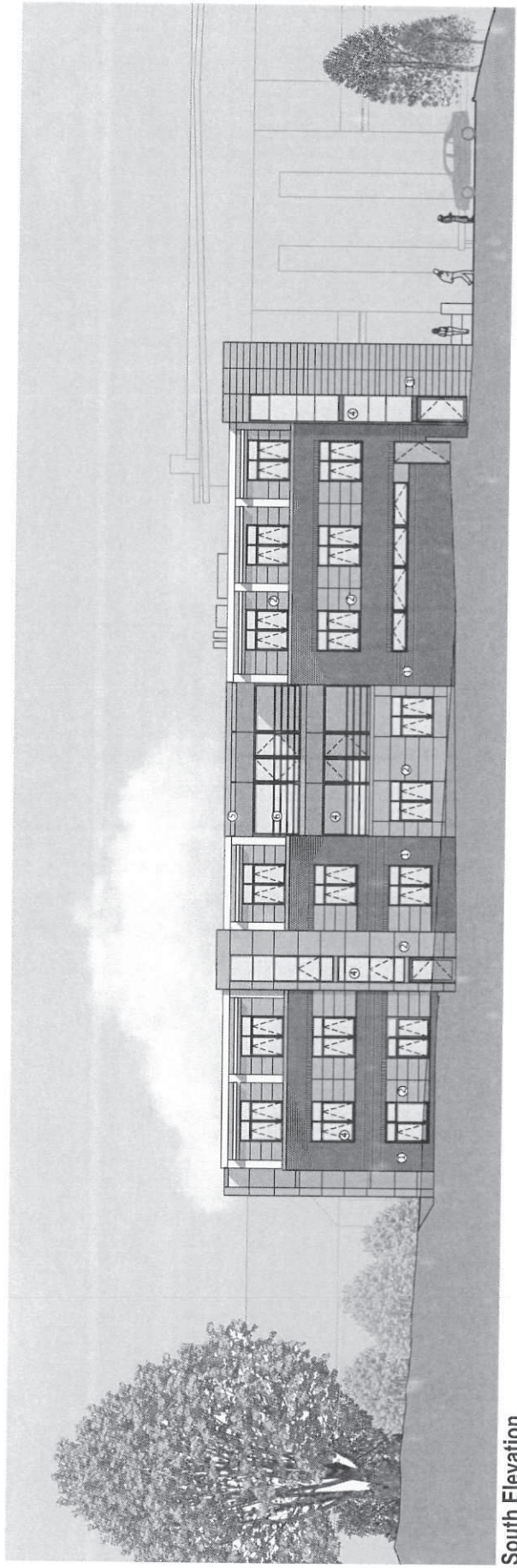


Aedas Architects  
City Centre, 100-101  
St. James Street, University  
Way, Oxford, OX1 2JD  
Tel: +44 (0)1865 200000  
Fax: +44 (0)1865 200001  
www.aedas.com

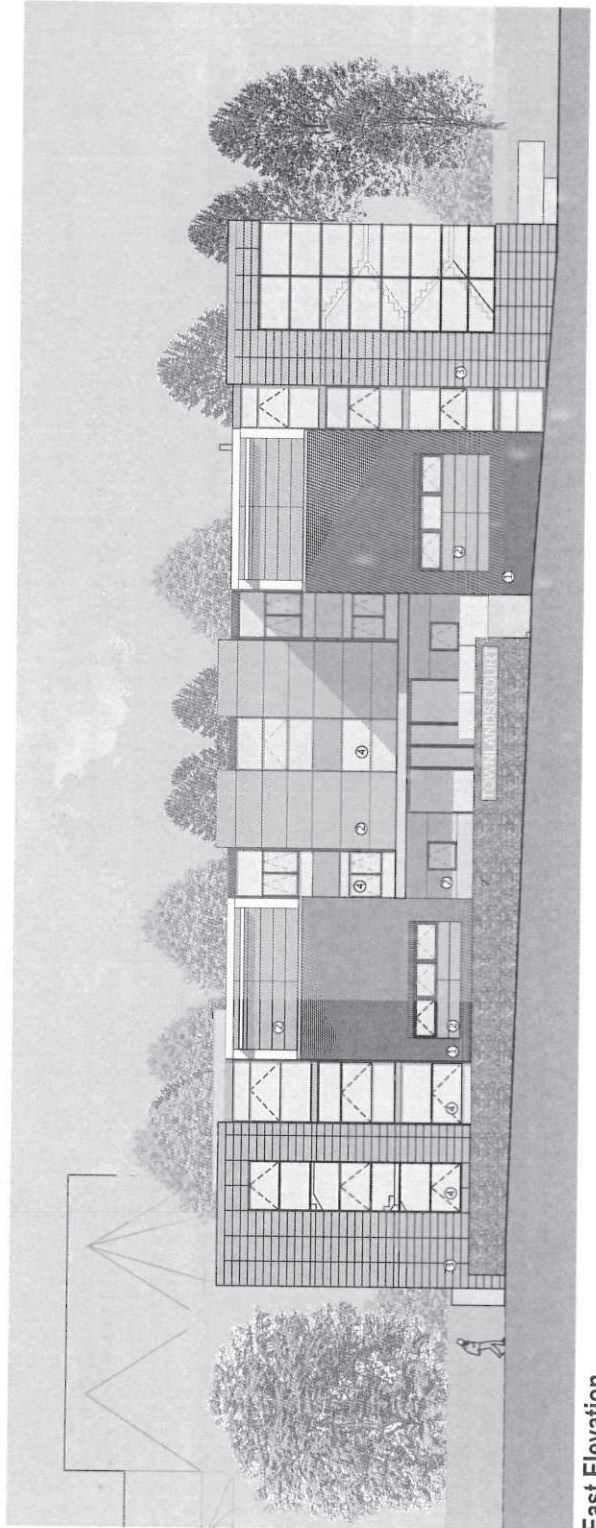
client name	Amber Solutions for Care
project	Townlands Community Hospital, Henley
drawing	3D Main Entrance View
computer file	plot.dwg
project number	2011.01017.000
drawing number	AED_VL20_001
scale	NTS
issue status	PLANNING
<p>This drawing is to be read in conjunction with all related drawings. All dimensions must be checked and verified against the original drawings. The originator should be notified immediately of any discrepancy. This drawing is copyright and remains the property of Aedas.</p>	



# Care Home



South Elevation  
1 : 100



East Elevation  
1 : 100

- MATERIALS KEY**
- ① Facing brickwork
  - ② Polyester powder coated aluminium cladding panels
  - ③ Ceramic rainscreen cladding panels
  - ④ Aluminium powder coated glazing system with opening lights
  - ⑤ Aluminium brise-soleil
  - ⑥ Balcony with polyester powder coated metal balustrading
  - ⑦ Gazon wall
  - ⑧ Louvers to plant room

**hunters**

Architects

1100 2011 2012  
1100 2011 2012  
1100 2011 2012

Project Name: TOWNLANDS CARE HOME - HENLEY  
 Location: SOUTH & EAST ELEVATIONS  
 Date: MAY 2012  
 Scale: 1:50 (E & S)  
 Drawing No: 1100 2011 2012  
 Project No: 1100 2011 2012  
 Client: HUNTERS  
 Planning submission

Project Name	Location	Date	Scale	Drawing No	Project No
TOWNLANDS CARE HOME - HENLEY	SOUTH & EAST ELEVATIONS	MAY 2012	1:50 (E & S)	1100 2011 2012	1100 2011 2012